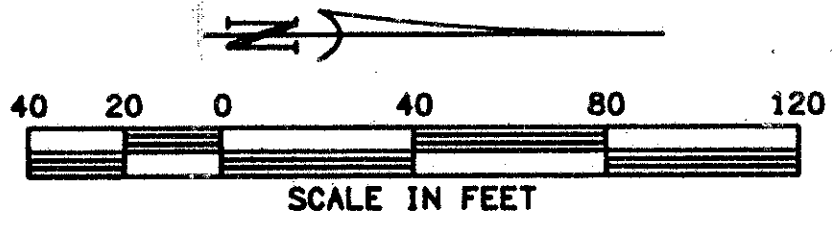


0653-001

145

SMITH DAIRY WEST P.U.D.-PLAT No. 1
 BEING A REPLAT OF PART OF BLOCK 38 OF PALM BEACH FARMS
 COMPANY PLAT No. 3, AS RECORDED IN PLAT BOOK 2, PAGES
 45 THROUGH 54 OF THE PUBLIC RECORDS OF PALM BEACH COUNTY, FLORIDA
 IN PART OF SECTIONS 4 AND 5, TOWNSHIP 45 SOUTH, RANGE 42 EAST,
 PALM BEACH COUNTY, FLORIDA
 SHEET 6 OF 8 SHEETS
 JUNE 1995



N: 814731.34
E: 926890.94

300.00 (G)
22.26
28.0

55.00 55.00 30.00 25.00 25.00

110' RIGHT OF WAY PER OFFICIAL RECORD BOOK 5897, PAGE 1776

Q HYPOLUXO ROAD

PALM BEACH COUNTY SURVEY DEPARTMENT
BRASS DISK IN CONCRETE "PBF 47"

N: 814548.22
E: 927169.70

N 89° 07' 19" E 2013.76 (TOTAL)
S 89° 07' 19" W 1000.00
2752.60 (TOTAL)

50' LAKE WORTH DRAINAGE DISTRICT L-18 CANAL PER QUIT CLAIM DEED, OFFICIAL RECORD BOOK 3289, PAGE 0049

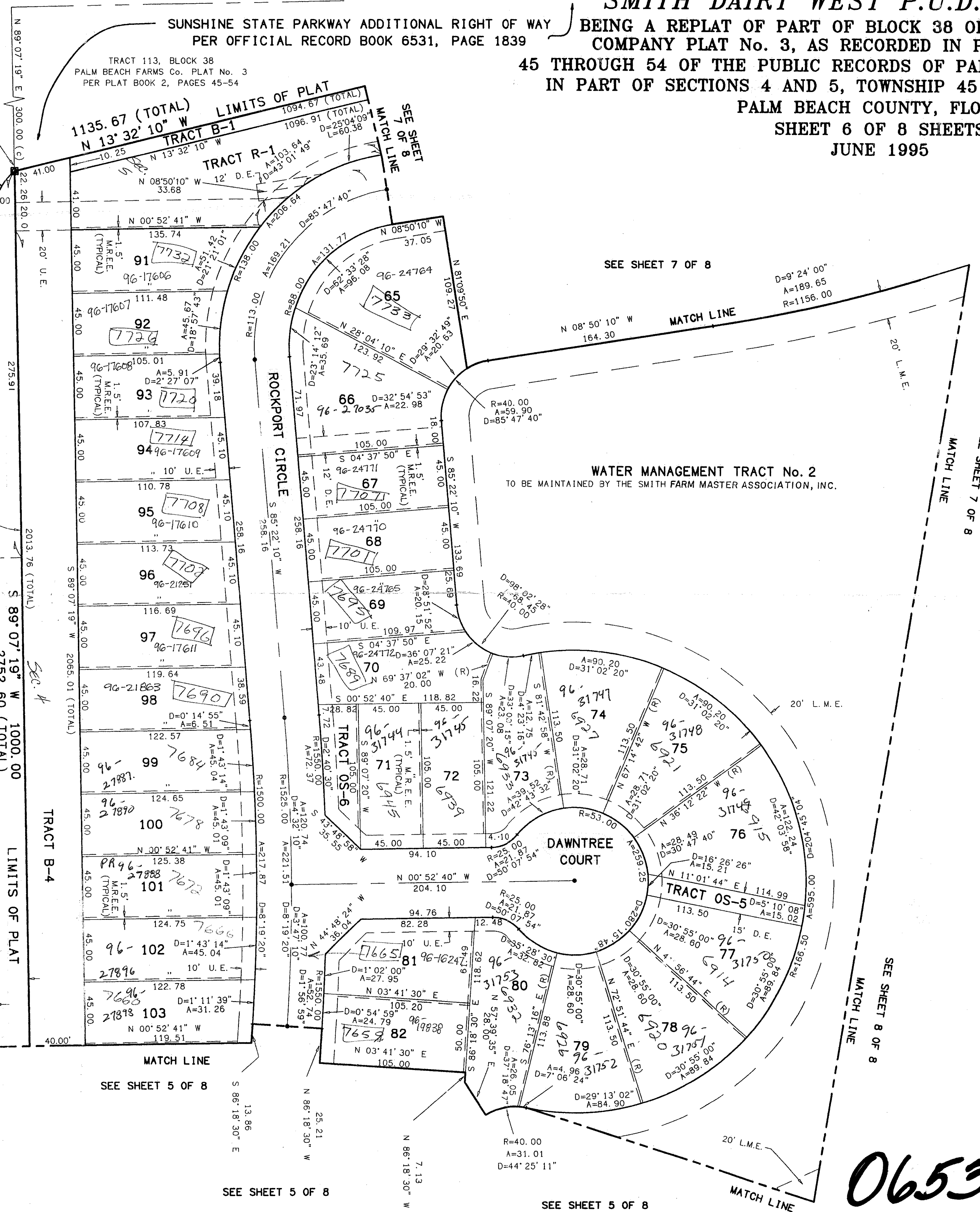
50' LAKE WORTH DRAINAGE DISTRICT L-18 CANAL PER QUIT CLAIM DEED, OFFICIAL RECORD BOOK 1585, PAGE 505

55' LAKE WORTH DRAINAGE DISTRICT L-18 CANAL PER QUIT CLAIM DEED, OFFICIAL RECORD BOOK 3289, PAGE 0049

SUBDIVISION: SMITH DAIRY WEST
 BOOK 76 PAGE 145
 FLOOD ZONE B FLOOD MAP #170A
 QUAD # 49 ZONING PUD
 SE 94-77 ZIP CODE 33467
 PUD NAME SAME

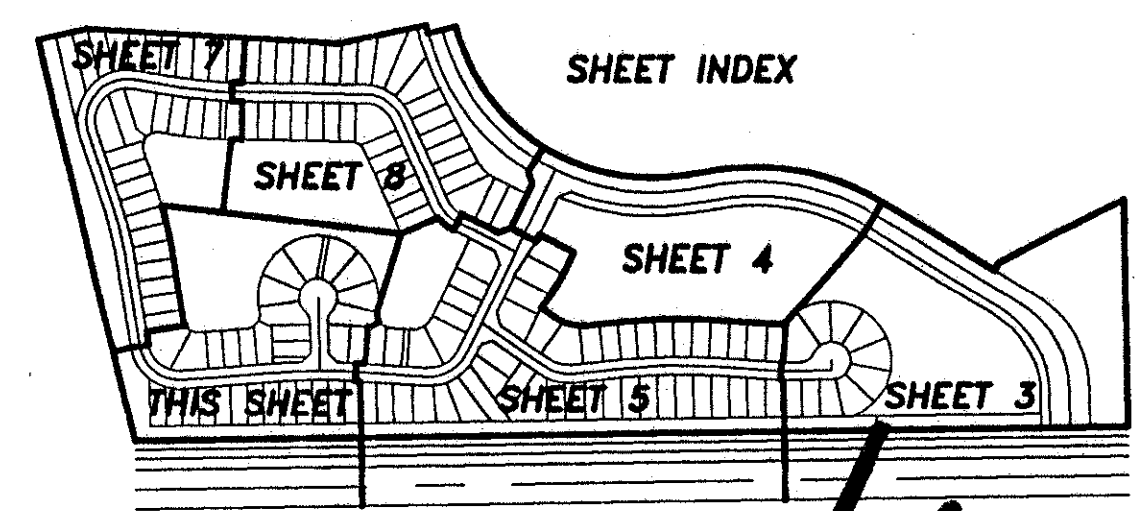
LAKE CHARLESTON PLAT No. 3
 PLAT BOOK 62, PAGE 55-68

TA 2-433



PET. 94-77
 ESCROW AGRMNT
 PARKS, SCHOOLS &
 ROADS (SEE LOT LIST)
 5/2/2/I

- LEGEND:
- = PERMANENT REFERENCE MONUMENT "P.L.S. 4828"
 - = PERMANENT CONTROL POINT "P.C.P. 4828"
 - R = RADIUS
 - A = ARC LENGTH
 - D = DELTA (CENTRAL ANGLE)
 - P.C. = POINT OF CURVATURE
 - P.T. = POINT OF TANGENCY
 - P.S.M. = PROFESSIONAL SURVEYOR & MAPPER
 - P.L.S. = PROFESSIONAL LAND SURVEYOR
 - U.E. = UTILITY EASEMENT
 - D.E. = DRAINAGE EASEMENT
 - L.M.E. = LAKE MAINTENANCE EASEMENT
 - N = NORTHING (GRID)
 - E = EASTING (GRID)
 - (C) = CALCULATED
 - (R) = RADIAL
 - M.R.E.E. = MAINTENANCE AND ROOF EAVE EASEMENT



SCALE: 1" = 40'	NICK MILLER, INC. Surveying & Development Consultants	DRAWN BY:
DATE: JUNE 1995		CHK:
SMITH DAIRY WEST P.U.D.-PLAT No. 1		DRAWING NUMBER
2560 RCA Blvd. • Suite 105 Palm Beach Gardens, Florida 33410 (407) 927-9200		940148

0653-001